



The Broadsheet

The newsletter for Badwell Ash, Badwell Green and Long Thurlow

Issue 109 February / March 2026



BA Run Club - Santa's Food Dash

The village came alive with Christmas spirit as residents, friends and neighbours gathered for Santa's Food Dash on Sunday 21st December. A festive run, jog or walk in support of our local food bank. Instead of an entry fee, everyone was invited to bring a non-perishable food donation. The generosity shown by the community was so touching.

We had 65 participants of all ages take part, with children, families and even dogs in Christmas jumpers joining the fun. From Santa hats and festive knits to full inflatable costumes, the village was treated to a wonderful sight as the group jingled its way through the streets, spreading smiles and Christmas cheer along the route. We were also met with great support from passing cars, with waves, smiles and beeps along the way.

Our fantastic marshals did a brilliant job keeping traffic under control and ensuring everyone stayed safe as the dash made its way through the village.

Their support and encouragement made the event run smoothly and allowed participants and spectators alike to fully enjoy the moment. Huge thanks to them.

After the run, everyone came together to warm up with hot and cold drinks, festive treats and a wonderful spread of homemade cakes and sausage rolls.

These went down an absolute treat and we would like to say a huge thank you to our volunteer bakers for their time, effort and generosity. Massive compliments to the chefs!

We would also like to say a special thank you to Ixworth Community Running Club for joining us and showing their support on the day. It was lovely to have you run alongside us and be part of the festivities – a great bunch of people and we really appreciated you coming along.

The response to the food collection completely exceeded all of our expectations. We were blown away by everyone's generosity, so much so that we even had to extend our food donation table to fit it all on!

We are happy to announce that in

total we raised around 180 kilograms of food. The majority was distributed and delivered before Christmas Day, with additional hampers carefully put together to support local families over the coming months. This was made possible thanks to Catriona Brinkley, our Priest, whose care and time ensured the food reached those who needed it most. We also raised £130.00 in refreshment donations for St Mary's Church.

We feel incredibly grateful and so lucky to live in a village, and be surrounded by other villages, full of people who care, support one another and truly show up. Thank you to everyone who took part, volunteered, donated or supported in any way. It really was so much fun and a beautiful reminder of what true community and Christmas spirit is all about. We are so proud to call Badwell Ash our home.

We would like to wish you a belated, very Merry Christmas and a Happy New Year from all of us at Badwell Ash Run Club & St Mary's Church, Badwell Ash.

Photo credits: Mike Arnold @_mikearnold, Karl Hott, Daniella Evans.

The Editor: badwellash@hotmail.co.uk

Sponsorship enquiries: badwellashpc@outlook.com

Next issue copy deadline: 6th March 2026

The Parish Council has made every effort to ensure the accuracy of the information within this newsletter was correct at time of publication. The Parish Council does not assume, and hereby disclaims, any liability to any party for any loss, damage caused by errors or omissions. The views within the newsletter are not necessarily those held by the Parish Council.

Check out the
issue online



Village Hall Events:

Quiz Night	Friday 24th April
Quiz Night	Friday 24th July
Wine Tasting Night	Friday 16th October

BA Run Club - Santa's Food Dash - more photos

Photo credits: Mike Arnold @_mikearnold, Karl Hottt, Daniella Evans.



From the Parish Council

Visit the villages' website: badwellash.suffolk.cloud | Contact the Parish Clerk: badwellashpc@outlook.co.uk

We're Off!

A couple of weeks ago, after the positive feedback in the Community Survey, it was formally agreed by the Parish Council and the Village Hall Committee to start the process of building the long-needed extension to the Village Hall.

The plans will include the addition of a new larger hall at the back of the existing hall to accommodate larger functions and double up as a sports hall. Also included will be a foyer/coffee area, lots more storage, revamped kitchen areas and, not least, upgraded toilet and cloakroom facilities.

Pete Dixon, Village Hall Trustee said **"We're excited! Although this will mean a lot of work for volunteer Trustees over the next couple of years, it will massively improve our offering to the village in the long term"**.

Chair of the Parish Council Richard Morris said **"We support this project as just one of the many ways the Parish Council wants to future-proof our parish. Badwell Ash and Long Thurlow will inevitably grow over the next twenty plus years and we want to make sure that we can meet the needs of everybody who lives in our Community"**.

As the project develops you will be able to read it here or on the Village Hall (<https://badwellashvillagehall.org.uk/>) or the Parish Council



(<https://badwellash.suffolk.cloud/parish-council/>) web sites.

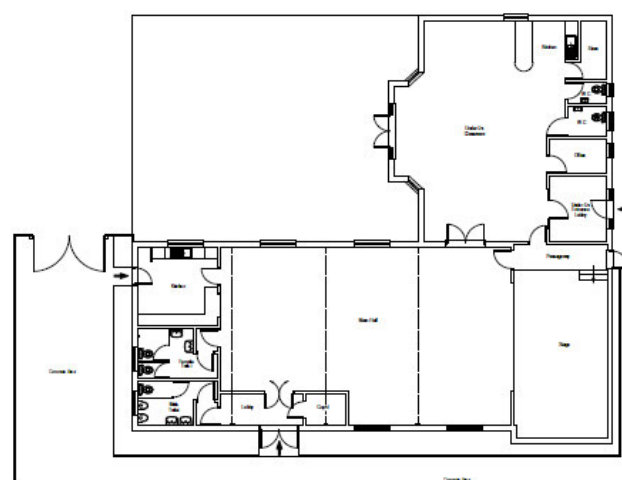
Would you like to be part of this project?

We will need more volunteers to support our joint planning and management team as the project develops. If you have had experience in areas like professional catering / management accountancy / project management / events promotion / grant research and applications / facilities management or PR (to name just a few!) we would love to meet you.

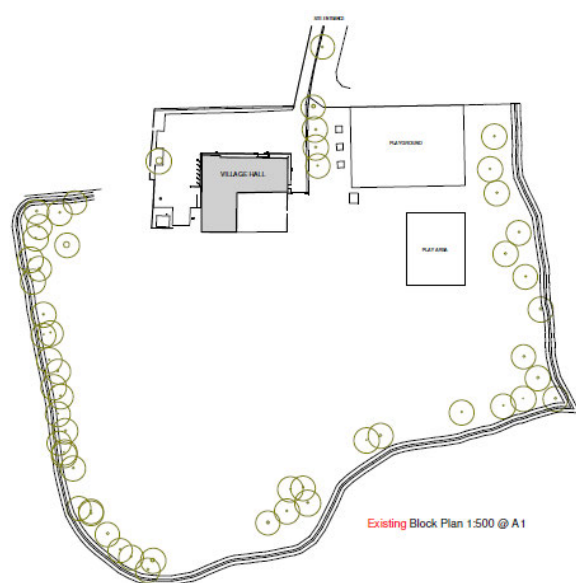
For a "no commitment" chat about a chance to be involved in a project that would put you at the heart of the parish please email the Clerk to the Parish Council at Badwellashpc@outlook.com

We would love to hear from you.

Community Working Group



Existing Ground Floor Layout Plan 1:100 @ A1



Existing Block Plan 1:500 @ A1

New Picnic Benches for the Village Hall

Over the Christmas period, Cllrs Mark Tomkins and Nick Harvey, with support from local resident Mark Pace, assembled and installed two new picnic benches at the Village Hall.

The benches were purchased by the Parish Council as part of ongoing efforts to improve outdoor facilities for community use.

These additions will provide more

space for residents to meet, relax, and enjoy the Village Hall grounds throughout the year. The Parish Council extends its thanks to everyone involved for giving up their time over the festive season.

Badwell Ash Parish Council Launches New Highways Rangers Initiative

*Badwell Ash Parish Council is pleased to announce that two members of our community have now completed their training as **Highways Rangers**, joining Suffolk Highways' **Community Self-Help Scheme**. This marks an important step in giving our village greater ability to care for the places we all value.*

The **Community Self-Help Scheme** was created by Suffolk Highways in partnership with town and parish councils across Suffolk. It grew from a simple, repeated request: local communities wanted the chance to do more to improve their surroundings, especially when small maintenance tasks fell outside Suffolk Highways' limited resources.

Suffolk County Council must prioritise essential safety work on the road network, which means there isn't always capacity to take on the extra jobs that help keep villages looking their best. The SelfHelp Scheme bridges that gap by giving communities the tools, training, and permission to take on certain tasks

themselves.

What the Highways Rangers and Volunteers Can Do

Volunteers under the supervision of our Highways Rangers are now able to carry out a range of small but important maintenance activities, including:

- Cutting grass in agreed areas
- Clearing overgrown plants and bushes
- Removing weeds
- Cleaning road and street signs
- Skirting footways (removing soil and debris from path edges)

These tasks may seem modest, but together they make a noticeable difference to the appearance, safety, and accessibility of our village.

Supporting Roadside Nature Reserves

The scheme also enables parish councils to help care for **Roadside Nature Reserves (RNRs)**—special

stretches of verge that support rare or ecologically important plants and wildlife. These areas play a vital role in maintaining biodiversity, and community involvement helps ensure they remain protected and well managed.

Volunteers Needed

To make the most of this opportunity, **we are seeking additional volunteers** who would like to contribute a little time to help keep Badwell Ash, Badwell Green and Long Thurlow tidy, safe, and thriving. Whether you enjoy gardening, care about wildlife, or simply want to support your community, your help would be warmly welcomed. This is a chance to take pride in our village and play a direct role in shaping the environment we all share

If you're interested in getting involved or would like to learn more, please contact the Parish Clerk at: badwellashpc@outlook.com

Media & Communications

Traffic Surveys

The Parish of Badwell Ash & Long Thurlow (BA<) have had an additional 150 houses built in the last five years, with currently 70 plus in the final stages of completion. This has led to an increase in Construction and local traffic on the Parish roads. This has raised the Community concerns on implementing Traffic Calming measures, which were highlighted in the 2025 BA< Community Survey Resident responses.

Badwell Ash Parish Council has commissioned two Traffic Surveys, carried out and completed by Suffolk Highways (Customer Experience and Community Works Team) in November 2025. The Surveys looked at traffic volume, speeds and axle weight on all of the Main Roads and Routes in use through Badwell Ash &



Long Thurlow.

The Traffic Calming recommendations from Suffolk Highways for Badwell Ash, were firstly the Street going towards Broadway and Walsham have been officially accepted by the Parish Council, currently waiting for Suffolk Highways to cost and plan the work required. The Parish Council is still in consultation with Suffolk Highways on the Traffic Calming measures required for and the re-location for the mandatory 30mph Speed sign on Richer road.

Carpet Bowls

Clive Hawkins

After the disappointing news we had to give last year, we are naturally hoping that this year will see a change in our fortunes. Despite that we held our Christmas Party evening and with food and drink we lifted our spirits, whilst toasting a better year to come.

Our Open Afternoon will have taken place by now so more about that in the next issue of the Broadsheet. In the meantime if you were unable to make it to the Open Afternoon and still want to give carpet bowls a try, do give us a look in on a Tuesday evening, 7.30 until 9.30. All are welcome and as we have said before a could be the game for you.

Contact Clive on 01359 259399

Village Hall Update

Clive Hawkins – Chairman of Trustees



We are now just over one month into the New Year and our minds will all be turning to what to do next. These are the same question that the Village Hall Trustees are asking themselves when considering how to further improve the village hall, having successfully completed a five year plan of improvements.

Expansion of the hall is one project but will take time to achieve. In the mean time we continue our efforts to attract more users and raise further funds for the continued upkeep and running of the village hall.

Last year when we held our End of Summer Party an invitation went

to our local Member of Parliament Adrian Ramsay, anticipating that he would be able to see the Green improvements that we had made to the hall. Unfortunately due to a prior engagement he was unable to attend. However we have been advised that Adrian has under consideration holding a Constituency Surgery in the village hall in the future possibly as early as February. Anyone interested in attending same should contact the Waveney Constituency Office on 01379 830200 or waveneyconstituencyoffice@parliament.uk

As mentioned in the last issue of the Broadsheet our Christmas Fayre was

about to take place. It turned out to be a great success enjoyed by all who attended, with stall holders all ready to book for this year. The Fayre also brought in the much needed funds we constantly require, so please keep supporting us, for your village hall.

The next event is a Quiz Night which will have taken place by the time this Broadsheet is read but we can confirm that it is a sell-out.

Keep looking out for further events and book early to avoid disappointment. Details can be found on our website, Facebook and badwellashvh@btinternet.com

Green Dilemmas - is our food system broken?

Richard Winch – richard@winchmail.net

This might seem an odd question to ask given that you can go to any supermarket and get a vast choice of foods at very competitive prices. However, when you look at some of the facts about our food system the reality is quite alarming.

Obesity and diet-related diseases like diabetes are a major problem in the UK. We have very high rates of obesity, with two-thirds of adults either overweight or obese. One in five children start primary school overweight or obese, and the figure rises to nearly a third of children by the time they leave. Poor diets are estimated to cost the economy about £270 billion annually from increased health and welfare costs and the significant impact on productivity.

The affordability of food is a major factor in addressing this problem. Lower income families currently spend around 20% of their income on food and that could rise to well over 50% if healthy diet recommendations were followed.

Recent shocks like the pandemic and the war in Ukraine have brought into focus the issue of food security. About 60% of UK food supply in terms of

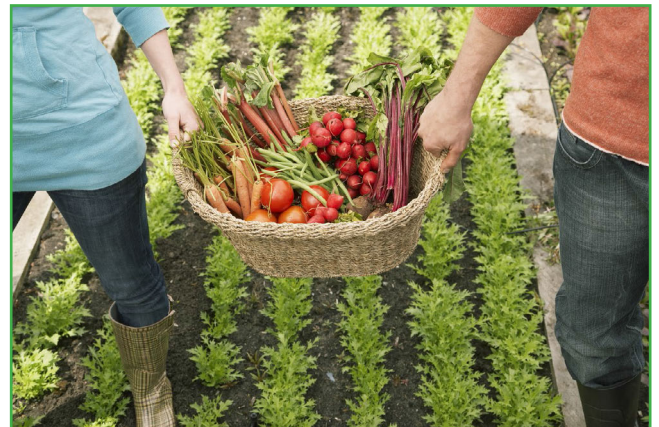
value is from domestic production (a lot of it in food manufacturing) but for foods like fruits and vegetables the figure is only 16%.

Even though roughly 70% of land in the UK is used for farming, UK agriculture represents about only about 0.6% of GDP. This fact alone indicates how little of what we spend is actually going to the part of the food chain growing our food.

UK farming currently faces significant financial instability, with falling incomes, policy uncertainty, and environmental challenges. A recent "Farm Profitability Review" presented to the government in late 2025 calls for urgent action to boost farmer income, noting that half of farms earn below the median household income.

On top of this we have the impact of climate change. Three of the five worst harvests on record have now occurred since 2020.

The industrialisation of farming since the Second World War has had catastrophic impacts on biodiversity.



The abundance of monitored species has declined by nearly 20% since 1970. There are new grant schemes to try and address this but it's not clear how the balance between environmental protection and food production is being assessed nationally.

The food industry is dominated by the large food retailers (over 90% of food retailing is controlled by 6 companies) and the large food and drinks manufacturers. They would argue that they are just responding to consumer demand. It's hard however not to be concerned about the general deteriorating health of the population and the long-term viability of farming which is core to healthier diets and our food security.

Parish Clerk Vacancy Badwell Ash Parish Council

Badwell Ash Parish Council is looking for an organised, community-focused individual to serve as Parish Clerk. This part-time, home-based role supports councillors, manages council administration, and helps deliver local projects.

Key Responsibilities

- Prepare agendas and minutes
- Manage correspondence and statutory records
- Ensure legal and procedural compliance
- Act as the main contact for residents and partners
- Support community initiatives and events

Training & Pay

CILCA training supported. Hours and salary follow NALC/SALC scales, based on experience.

Full job description

<https://badwellash.suffolk.cloud/parish-council/>

About You

- Strong written and verbal communication
- Excellent organisation and attention to detail
- Team Player, able to work independently and meet deadlines
- Confident with digital tools (email, documents, website, Facebook)
- Understanding of local government is helpful; training available
- Professional, positive, and community-minded

How to Apply

Send your CV and covering letter to

badwellashpc@outlook.com

Closing date: 13 March 2026

Citizens Advice Mid Suffolk

citizens
advice

Mid Suffolk

I bought a doll for my child recently. I thought it was manufactured by a well-known brand, but I suspect it might be counterfeit. How can I be sure and what are my rights?

You're right to seek advice about this issue, because counterfeit goods aren't only illegal, they can be dangerous.

Fake children's toys, including dolls, often don't meet safety standards and can pose choking hazards - poor manufacturing can mean small parts are easily detachable.

Counterfeit goods are fake products designed to mimic the authentic ones sold by genuine brands. Sometimes it's easy to spot a knock-off, other times it can be harder to tell.

It's not just toys and games - things like clothing, footwear, e-cigarettes, perfumes and media devices can also be counterfeit.

Things to watch out for include strangely low prices from well-known brands and signs of poor quality - like missing security seals, bad or non-existent packaging, blurry logos and

poor stitching. You may also spot some spelling mistakes in the advert or on the packaging.

Looking at photos from official sellers can help when making comparisons, and it's important to only buy products from reputable sellers.

If you have purchased a counterfeit item, there are some steps you can take to try and get your money back. You're legally entitled to a full refund on fake goods within 30 days of your purchase.

If it's been over 30 days since you paid, but less than six months, the seller can provide you with a real version of the item first. If they can't, then they're legally required to give you a full refund. If you paid more than six months ago, you're only entitled to a part-refund based on how much you've used the item and how long you've had it.

Sometimes sellers might refuse to refund you, and argue the items were obviously fake because they were very cheap, but they're breaking the law by selling them and your legal rights still apply.

If this happens and you paid by debit card, contact your bank and ask to use the 'chargeback scheme'. If you paid by credit card and the item cost less than £100, you can ask to use the same scheme.

If you paid by credit card and the item cost between £100 and £30,000, tell your credit card company you want to make a 'section 75' claim to get your money back. To report counterfeit goods or get help getting your money back, contact the Citizens Advice Consumer Service. You can also report a seller to Trading Standards, which investigates criminal activity.

Citizens Advice Mid Suffolk can provide in depth advice on this issue and much more, including debt, finances, employment, benefits and family/relationships. You can contact them by phone on 01449 676060, visit in person at Milton House, 5 Milton Road South, Stowmarket IP14 1EZ or use the contact form at midsuffolkcab.org.uk/contact-us. Opening hours are Monday-Thursday 9.30am - 3.30pm and Friday 9.30am - 12.30pm.

Tithes – A Taxation on Land

Howard Newman – info@badwellashheritage.co.uk

There has been a lot of publicity recently about the Government's imposition of Inheritance Tax on farms. The farmers don't like it and co-ordinated a campaign of protest and disruption which has resulted in the Government "watering down" their proposals.

Protests from country landowners against any form of land tax is nothing new. Between the 1914/1918 and 1939/1945 wars, almost 100,000 farmers and landowners in England and Wales fought for a just and equitable end to land taxes or tithes. Known as the "Tithe Wars", they created a bitter and lasting rift between farming families and the government of the day.

Almost a hundred years earlier in the 1830s there was widespread discontent from agricultural workers in South-East England and East Anglia who were protesting against harsh working conditions and low wages as a result of tithes. These were known as the "Swing Riots".

So, exactly what is this tithe that had caused so much trouble for over a century? A tithe was an ancient payment made by landowners to support the Anglican Church. It was originally paid 'in kind' with farmers giving one tenth of their crops, livestock or other produce to the established church. Tithe barns were built to store this produce.

When Henry VIII dissolved the monasteries in the 16th century, some of the land passed out of church ownership and into private landowners' hands. As a result, some of the tithes were then paid to these private landowners as well as the church.

From the 17th century it became increasingly common for farmers and landowners to pay cash



sums in lieu of payments 'in kind'. However, there was no uniformity of how these cash sums were assessed.

So, in 1836, the government rationalised the whole system by passing the Tithe Commutation Act. Under the Act, all remaining tithe payments 'in kind' were converted to a standardised country wide system of cash payments with the tax rate due based on the national price of grain in 1836.

Every parish produced a Tithe Map which showed the extent of each field within the parish and who owned or occupied it. Using these schedules or Apportionment, as they were known, the tithe payment could then be assessed. These payments were collected by the Government and were paid both to the church and to private landowners.

The History Society has acquired a copy of the Tithe Map and Rent-Charge Apportionment for the Parish of Badwell Ash which was made in 1839. The map is very detailed and shows every field which was allocated a number relating to the Apportionment.

To illustrate this, we can look at Platinum Drive. In 1839, the land designated on the Tithe Map as Plot 42, was owned by a William Joseph; the occupier was Philip Parker of Parkers Farmhouse (who farmed 150 acres in the parish); the field was called "Micklewoods" and comprised 3.35 acres. The whole of William Joseph's land holding

in the village of 84 acres made an annual rent-charge or tithe payment £18 13s 3d (£18 66p) or £1,688.58 today.

Another good example is Ladywood Drive off The Broadway. In 1839 this was two fields, plots 121 and 122, owned by a Rebecca Clough. She lived in Feltwell, Norfolk but was the owner of The Manor of Shakerland with these plots. Plot 121 was known as "Upper New Croft" and Plot 122 was called "Lower New Croft". Both were described as being arable land and comprised together some 17.89 acres. The land was farmed by Thomas Francis of Shakerland Hall who was Rebecca Clough's tenant. In total, Rebecca Clough owned 265 acres within the parish and paid annually £80 (£7,240 today).

Our copy of the Tithe Map and Apportionment of 1839 gives a complete picture of who owned and occupied all the land within the parish together with the medieval field names. Today unfortunately, many of the field boundaries and ancient field names have been lost due to field amalgamation being more suitable to modern day agriculture.

Annual tithe payments were finally abolished in 1936 and were replaced by "one off" payments usually made when the land was sold. The whole system was eventually abolished in 1976.

Plumbing, Heating & Building Refurbishment Services

PLUMBING, HEATING & RENEWABLES

- ✓ Bathrooms
- ✓ Boiler installations
- ✓ Boiler Servicing & Repairs
- ✓ Power Flushing
- ✓ Central Heating
- ✓ Underfloor Heating
- ✓ Air Source Heat Pumps
- ✓ Electric Boilers & Radiators
- ✓ Water Softeners & Filter Taps
- ✓ Oil Tanks

30+

YEARS TRADING



Our primary service area covers a 30 mile radius of Bury St Edmunds



Checkatrade

BUILDING & REFURBISHMENTS

- Refurbishments, Conversions & Alterations ✓
- Building & Property Maintenance ✓
- Bricklaying | Carpentry | Electrical Services ✓
- Groundworks, Landscaping & Fencing ✓
- Disabled Adaptations ✓
- Flooring Services ✓
- Kitchen, Bathroom, & Exterior Tiling ✓
- Plastering & Rendering ✓
- Painting & Decorating ✓
- Roofing ✓

WILLOWSERVE LTD

Plumbing, Heating & Building Refurbishment Services



Est. 1991

☎ 01359 259886

☎ 07771 557937

WILLOWSERVELTD.COM



Get Involved and Support St Nicholas Hospice Care in 2026

St Nicholas Hospice Care is inviting the community to start 2026 all for a good cause by asking people to get involved with its exciting calendar of fundraising events for the year ahead.

The hospice is encouraging supporters to beat the winter blues by registering for early access, which will mean they'll hear about event registrations and sign-ups opening before anyone else.

The Hospice's much-loved Sunset Walk, sponsored by Greene King, has now officially launched for 2026. Returning for its third year on Saturday 20 June. Participants can choose between a 10km or 15km route, complete with live music, entertainment, and quieter

reflective moments to remember loved ones. An earlybird offer is currently running, so sign up quick for a discount.

The Sunset Walk is just one highlight of a busy events calendar. St Nicholas Hospice Care's 2026 programme also includes the St Nic's 10K Run, Cycle Ride, Festive Fun Run, Open Gardens, and a series of exciting challenge events, from firewalking to trekking adventures.

To and to get involved and register to



be in the know when sign ups open visit:

<https://stnicholashospice.org.uk/contact-us/get-involved-in-fundraising-events/>

Woolpit Health Centre



A Happy New Year to all!

Looking after the health of you and your family is one of the most important investments you can make in your life.

Maintaining a healthy lifestyle through regular exercise, balanced nutrition, and stress management not only helps prevent illness but also improves your overall quality of life.

Equally vital is taking advantage of the free NHS vaccination and screening opportunities outlined below.

Vaccinations

Unfortunately, in 2025 there was an outbreak of measles in the UK and the severity of flu this winter has hit the news headlines.

For some, these diseases can be a serious and life-threatening illness.

To reduce the risk, we therefore urge those who are eligible to make sure they are vaccinated.

Whilst it is normally given as a childhood vaccine, the MMR (measles, mumps and rubella) vaccine can be given at any age. Please speak to your GP practice about getting vaccinated if you did not have it as a child, you only had one dose or

you're not sure if you've been fully vaccinated.

Adults are eligible for a free flu vaccine if aged 65 years or over; pregnant; living with certain long-term health conditions; a carer; living with someone with a weak immune system.

Additionally, children aged 2-16 years are offered a flu vaccine in the form of a quick and painless nasal spray. Importantly, this protects both the child and the risk of spreading to others.

The annual flu vaccination season runs until 31st March 2026. If you are eligible and have yet to be vaccinated, please contact your GP practice.

NHS Health Checks

These are available every 5 years for patients aged 40 to 74 who do not have a pre-existing health condition.

It involves completion of a lifestyle questionnaire, together with measurements including height, weight, blood pressure, cholesterol.

It can tell if you are at higher risk of getting health problems such as heart disease, diabetes, kidney disease, stroke and dementia.

Cancer Screening Programmes

- **Bowel** - A home testing kit is sent through the post every 2 years to everyone aged 50 – 74 years.
- **Breast Cancer** - uses x-rays, called mammograms, to look for cancers that are too small to see or feel. You automatically get your first invitation between the ages of 50 and 53. You'll then be invited every 3 years until your 71st birthday.
- **Cervical Screening** - a test to check the health of the cervix and help prevent cervical cancer. It is offered to women and people with a cervix aged 25 to 64.

These programmes are designed to detect potential health issues at an early stage, often before symptoms appear. Early detection greatly increases the chances of successful treatment and can even save lives.

At this time of resolutions, we urge you to take proactive steps to prioritise your health, protect your wellbeing and ensure a healthier future.

Thank you and best wishes from Woolpit Health Centre



DAVID MARTIN

MOTOR VEHICLE ENGINEER

Thedwastre Place, Station Hill, Thurston, Bury St. Edmunds, Suffolk, IP31 3QU



01359 230536



07808 508864



info@davidmartinmotorengineer.co.uk

www.davidmartinmotorengineer.co.uk Open Monday - Friday 8am - 5pm



Local, honest, friendly, reliable family run business (with over 150 years experience) offering car and light commercial vehicle repairs at competitive prices



SERVICING ON ALL MAKES AND MODELS

**including vehicles still under main dealer warranty

Cam belts
Bodywork
Welding
Brake overhauls

Tyres supplied
& fitted at
competitive
prices

Exhausts
Batteries
4 Wheel alignment



MOTs

Class 4, 5 (minibus) & 7
(up to 3,500kg)
**including free
retest**
within 10 working days

Winter check £35 plus VAT

Includes the
following checks:
Under bonnet levels
Tyres, Washers
Lights, etc.



Courtesy car (subject to availability)



Check out our Google review and feedback @ www.goodgaragescheme.com

NO WORK IS CARRIED OUT WITHOUT FULL CONSENT FROM THE CUSTOMER



MID SUFFOLK COMMUNITY ENERGY EVENT

Getting involved in clean, local energy

Wednesday 21st January
7:00 - 8:30pm
The Mix, Stowmarket



Locally-owned projects -
solar, retrofit and energy advice



Lower bills & local benefits -
saving money and reinvesting locally



Community-led action -
shaped by people who live
here



Scan to register

An open event for residents, community groups
and anyone interested in local energy, saving
money and community action.



Hosted by Babergh & Mid Suffolk District Councils
With Community Energy Pathways and Central
Suffolk Community Energy



Paint and Plonk Night

26TH FEB 2026

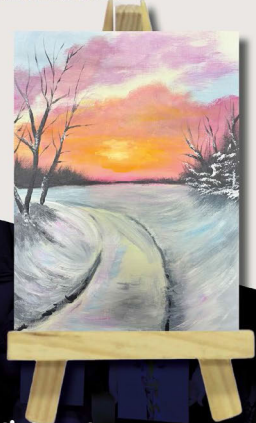
THURSDAY 7PM

Venue: Badwell Ash Village Hall, Badwell Ash, Bury Saint Edmunds IP31 3DG

**Tickets:
£27**

Booking is essential and full
payment is required on booking.

You will be guided through a
painting, step-by-step, from start
to finish. At the end of the event
you can take your very own
masterpiece home.
This class is for everyone,
no experience necessary.
All materials included for painting
(refreshments not included).



Email: trudy.harman@btinternet.com

www.facebook.com/Paint-and-Plonk

Neighbourhood Watch - Long Thurlow



If you live in Long Thurlow (including the bit that is in Great Ashfield) and are not a member of our Neighbourhood Watch scheme and would like to join (no fees), please let me have your details and I will add you to the list. Just send an email to me at da-vid.girling2@gmail.com with your name and address, and a contact phone number (optional). Your email is only used to share information on local crime or community related matters. Your email is not shared with anyone else.

WANTED

TO PURCHASE, LEASE, OR DONATE



AS A RESULT OF THE POSITIVE RESPONSE SHOWN IN YOUR COMMUNITY SURVEY, YOUR PARISH COUNCIL ARE LOOKING TO ACQUIRE A PARCEL OF LAND WITHIN THE PARISH, WHICH CAN BE USED TO POTENTIALLY PROVIDE SOME OR ALL OF THE FOLLOWING:- WILDLIFE AREA, COMMUNITY ORCHARD, OPEN GREEN SPACE AND ALLOTMENTS.

PLEASE CONTACT THE BADWELL ASH PARISH CLERK VIA
Badwellashpc@outlook.com

Many thanks
Badwell Ash Parish Council



MOT CLASSES 4 & 7



- CLUTCHES
- BATTERIES
- CAMBELTS/TIMING CHAIN
- SERVICING
- TRACKING
- WHEEL BALANCING

Mkautosmotcentre ltd@gmail.com



MOT: 01359 241158/244421

REPAIRS: 01359 245998



The workshop
Grove lane
Elmswell
IP30 9HN

Please note as of February
2023 D A Bevan has been
taken over by MK Autos



Find us on
Facebook.

•
W
E
L
D
I
N
G
•
T
Y
R
E
S
•
B
R
A
K
E
S

•
E
X
H
A
U
S
T
S
•
D
I
A
G
N
O
S
T
I
C
S



You are invited to the
Badwell Ash Village Hall

2026 Booking Offer

What's Included?

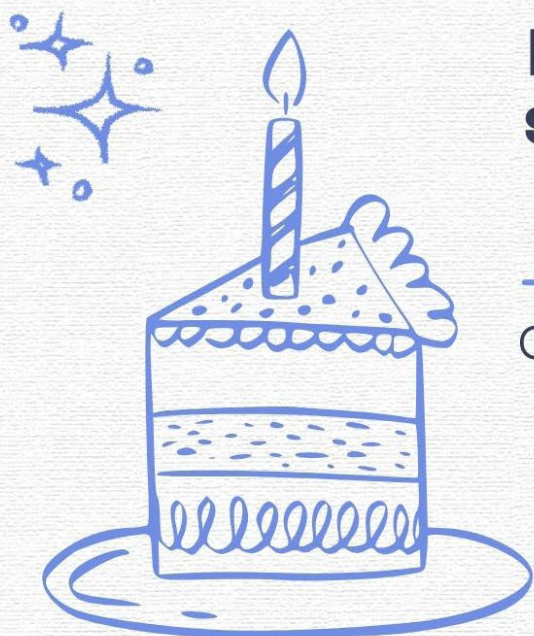
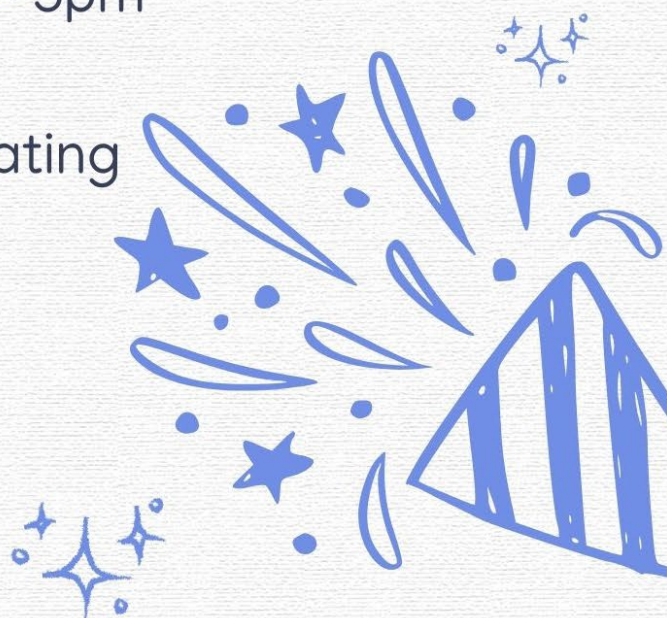
- 5 hour* duration;
10am – 3pm OR 12 noon – 5pm
- Tables & chairs included
- No additional cost for heating & electricity

Okay, How Much?

Small Hall only = £40

Main Hall only = £60

Entire Village Hall = £90



**Book your party with us to
secure this deal before the
end of MARCH 2026**

Contact: janetdevries35@gmail.com to
check availability & book.

A 50% deposit fee is needed to secure
your booking. Full payment needed if your
date is less than 30 days.

*Duration to include set up & tidy away