

The Badwell Broadsheet

Issue 96 - October / November 2023

A note from the Chair

The village has been busy over the summer with the Summer Fayre, the History Exhibition and Church open day. The Parish Council have also been working hard on the Neighbourhood Plan.

With Christmas approaching, we can look forward to Christmas Fayres, shopping events and quizzes... I hope to see many of you at each one of these events.

Thank you to everyone involved in all these events, both over the last few months and in the future. It helps build our community into a place we all enjoy living in.

On the subject of being involved, a number of our committees and societies are looking for volunteers. If you have some spare time and want to be involved in the local community, please contact the relevant people. Your help and support really do make a difference.

The Parish Council are looking for new members, as well as people to help with the Neighbourhood Plan. If you'd like to know more, please get in touch with the Parish Clerk.

If you are interested in local history, the History Society is looking for new members. The Suffolk Local History Council are also looking for a Village Recorder. More info on this can be found on page 2.

The Village Hall is looking for committee members. Don't hesitate to contact the Chairman of Trustees. Contact details on page 3.

Finally, Toad Patrol is seeking a volunteer admin assistant - more info and contact details are on page 6.

Last but not least, thank you to this issue's sponsor - Clarkes of Walsham. We really value your support for the publication.

With best wishes,

Richard Morris,
Chair, Badwell Ash Parish Council.



Image credit: Laurence Harvey Photography

In the village...

Monday

Zumba
7-8pm, Village Hall.

Tuesday

Silver Ash
2.00-3.30pm Village Hall.
In the small hall, once a fortnight.
Contact Angela 01359 258028

Carpet Bowls
7:30-9:30pm. Village Hall.

Wednesday

Dog training classes
6:30-8:30. Village Hall.

Thursday

Dog training classes
6:30-8:30. Village Hall.

The Parish Council has made every effort to ensure the accuracy of the information within this newsletter was correct at time of publication. The Parish Council does not assume and hereby disclaims any liability to any party for any loss, damage caused by errors or omissions. The views within the newsletter are not necessarily those held by the Parish Council.

Dates for your diary



Jumble Sale - 14 Oct. Church

Shopping Evening - 20 Oct.
7pm onwards. Village Hall

WI Christmas Fayre - 11 Nov.
11-3pm. Village Hall. (see pg. 7 for more info).

Quiz Night - 17 Nov.
7pm. Village Hall

Festive Christmas event - 2 Dec.
10am to 2pm. Village Hall

For events at the church, please contact Stephen Rose - 07714 273 669

*For village hall events please contact Caroline Morris
cdv_11@hotmail.com | 07843 248411*

The Badwell Ash History Society

Pat Monk - patmmonk@gmail.com

Badwell Ash History - The White Horse Inn

On Saturday, 9 September, The Badwell Ash History Society exhibited their research into the history of The White Horse Inn, one of the oldest buildings in the village.

There has been an Inn on this site since the building was built in the C16 almost 500 years ago. Although this Grade II Listed building was clad in red brick in the C19, the original Tudor timber framed building can still be seen inside, especially in the bars.

The earliest known written record of The White Horse Inn is from an advertisement in The Suffolk Mercury of 1727 advertising the sale of the Inn and all its beer! A few years later, in 1749, the pub was sold for just £100! At that time, the Lord of The Manor of Badwell Ash owned the freehold of the pub, who was paid an annual rent. Every purchaser bought a Copyhold Title of the pub until 1925, when Copyhold tenure was abolished.

The Inn was owned by various Copyholders up until 1876 when a John Miller, a brewer from Walsham le Willows, sold The White Horse together with 5 other pubs and a brewery in Walsham to Taylor, Sons and Dowson of Diss, who were Brewers. In 1897, Tollemache Breweries Ltd from Ipswich bought Taylor, Sons and Dowson and all their pubs but, a year later,

they sold everything to E. Lacon and Sons of Great Yarmouth. The Lacons sign can be seen on the gable end of the pub today. Lacons was eventually sold to Whitbreads in 1968.

The History Society has traced most of the Landlords back to 1735. However, although many of the landlords in the 20th century have been identified, there are some gaps in the timeline from the late 1960s onwards, and if anyone has any recollections of who these Landlords might have been, would they please contact Howard Newman of The History Society via email at howardandrew1949@gmail.com.



Badwell Ash History Exhibition – September 2023

On Saturday 9 September the Badwell Ash History Society held an exhibition in St. Mary's Church to celebrate 10 years since its inauguration. Over this time, we have undertaken research, several exhibitions and the publication of various pamphlets and booklets about the history of Badwell Ash.

At the exhibition, there were details about two Heritage Lottery Grants awarded to the History Society, the Church Clock Restoration and the WWI research along with a WWII Exhibition and the Graveyard research. We have also published a number of pamphlets and booklets including the Badwell Ash Windmill booklet and a detailed account of the history of St. Mary's Church.

There was a new display about the White Horse Inn history. As usual the Tour Towers were very popular and the Recorder Books. Visitors were able to sit in the pews with their refreshments to look at several videos we have made, along with the website - <http://www.badwellashheritage.co.uk/>

There were 107 people attending the exhibition many of whom came from outside of the village and indeed outside of the county. Several visitors had found out about the exhibition to the Badwell Ash History Society Facebook Page which now has 374 members.

The Badwell Ash History Society is looking for new members.

The Society has been going for 10 years now, and we have an active website www.badwellashheritage.co.uk.

We carry out mainly local village historical research and organise occasional exhibitions. So, if you would like to become involved in Local History, please contact me.

The Suffolk Local History Council is also looking to fill a vacancy for a Village Recorder. This is literally someone recording the "day-to-day" life of the village, which is then submitted to Suffolk Local History Council and the Bury Records Office at the end of each year for posterity. This is achieved by collating leaflets or other written material which is interesting and informative! The inclusion of any colour images is appreciated so that we can have collections and observations in a record of what will become tomorrow's history. You can find out more about the Suffolk Recorder Scheme at <https://slhc.org.uk/recorders/>

Please contact me by email: patmmonk@gmail.com or speak with me in person at 01359 258538 if either of these historical areas interests you.

East Anglian Traditional Music Trust

We want to introduce you to the charity East Anglian Traditional Music Trust. The Trust collect, archive and perform music, song, dance, and stories which have been passed down through generations. We are constantly looking for ways to share these treasures and capture the interest of new audiences.

On Sunday, 29th October, between 2 and 4 pm in the Walsham Le Willows Memorial Hall, IP31 3AA, we invite you to join us for 2 hours of entertainment. Entry to the event is free, space permitting. Donations will be gratefully accepted.

This will be an informal afternoon where you can sit back and enjoy the performances, or you can take part. You can see jig dolls in action, watch nimble-footed step dancers, listen to or join in with a song or tune, or hear the odd, intriguing tale. You may even be able to witness some energetic broom dancing, All entertainment built around Suffolk and Norfolk traditions.

Earlier this year, we held a similar event in Yaxley Village Hall, which was a great success, and many new members signed up to receive news of our other events

throughout the Counties.

We look forward to seeing you at our Walsham Le Willows and hope it whets your appetite to learn more about East Anglian Traditions and Music.

For more details about the Trust, take a look at our website www.eatmt.org.uk, email info@eatmt.org.uk or ring 07495 054669.



Village Hall update **Village Hall Events**

Clive Hawkins - Chairman of Trustees
clive@agenthawkins.plus.com

Caroline Morris - cdv_11@hotmail.com | 07843 248411

How time flies, for since I last wrote about what was happening at the village hall, when I mentioned the new doors and windows, the committee have received many favourable comments noting the improvement. It is good to know that our endeavours are being appreciated. More improvements are planned, and we hope to be able to tell you more in the next issue of The Broadsheet.

At long last, we have been able to replace the old small square tables, now past their use-by date, with smaller but similar tables to those of the larger type we already have. Both types can now be used in unison with one another. Please remember that these improvements cost money and funding and that your continued support for your village hall is essential.

Our Events Committee put on a great time for all at the Summer Fayre, with the village spirit once again seen by all who attended. Look out for the next fundraising event, the first, a Shopping Event on 20th October. It's not to be missed. Another Quiz Night is also on its way.

Finally, the Trustee Committee are still seeking new Trustee members willing to add their skills and enthusiasm into maintaining the well-being of the hall. Please call and see what is involved. It could well be for you.

The Summer Fayre

Another amazing event. I couldn't have asked for a better day. The Summer Fayre was full of fun, laughter, lots of friends and families spending time together. Great food, drinks, cakes, ice creams, competitions and games. Not forgetting live music from Adam Thomas and Route 66.

Thank you to everyone who came and supported the event and those who helped before and on the day.

Upcoming events

The Shopping Evening on 20th October is one not to be missed. Posters and leaflets will be out soon, giving you all the details.

The next Quiz night is Friday, 17th November, at 7pm for a 7.30pm start. There will hopefully be a Spud Lunch on Saturday, 18th November, 12-2pm.

Our last event of the year will be a Christmas Bonanza on Saturday, 2nd December. Details to follow.

All events will be held at the Village Hall in Badwell Ash.



Green Dilemmas - new oil boiler ban from 2026.

Richard Winch – richard@winchmail.net

Oil and gas boilers release carbon dioxide and therefore contribute to climate change. The government is planning to ban the installation of new oil boilers from 2026. New gas boilers (the main heating source in the UK) are banned for new homes from 2025 and all properties by 2035.

The fact that the deadline for oil boilers is now so close could make life difficult for roughly 1.7 million people, mainly in rural communities. There has been very little discussion about the cost implications for these citizens if their boilers need replacing.

The first thing you need to do is to be clear about the likely lifetime of your oil boiler and check this out with whoever services your boiler. If you have a relatively new boiler, you probably don't need to worry too much as the maintenance of oil boilers will still be allowed. You should start looking at insulation grants, as anything you can do to improve your home's insulation will help with your options longer term.

If your boiler is quite old and may need replacing in the next few years, then you have a problem.

The main option recommended by the government is to install an air source heat pump in place of your oil boiler. These run off electricity, and the theory is that if we can generate our electricity from renewables, we can heat our homes without impacting the carbon dioxide in the atmosphere. You can get a grant of £5000 to £6000 towards the cost of an air source heat pump, but the total cost of the installation can be significantly more.

The other problem is that air source heat pumps don't work well in a poorly insulated house, and you will almost certainly need your radiators changing to ensure your home will be warm enough. Insulation is something we should all be doing anyway, and insulation grants are available. Again, it comes at a cost which can be substantial.



The other option is to replace your oil boiler in the next couple of years so you have a new boiler in place before the ban (a boiler should last 15 to 30 years). This will have the opposite impact to what was intended by the ban as we will end up having a wave of new installations instead of alternative options.

There is a possibility oil boilers will be allowed to remain operational if they transition to more environmentally friendly fuels such as hydrotreated vegetable oil (HVO), which can serve as a replacement fuel with minor adjustments. However, whether this will be allowed isn't clear at the moment. This could be a cost-effective alternative.

There are other options like ground source heat pumps (you need garden space), biomass boilers (there is a dispute about how carbon neutral this technology is) and electric storage heaters and radiators (costly to run, and there are no government grants).

There is no need to panic, and government rulings may change, but if you have an oil boiler, you need to start thinking about what you will do.

From the Parish Council

Parish Clerk: Carole Rose. badwellashpc@outlook.com | Visit the villages' website: badwellash.suffolk.cloud

Footpath closure

Temporary closure of part of footpath 11 - Badwell Ash

From 2nd August, for an initial period of 21 days, Footpath 11, Badwell Ash from Hunston Road for 206 metres southbound will be closed to all pedestrian traffic. This is for safety reasons to allow the mobilisation of a construction site. Co-ordinated works may also take place during this period.

It is intended that the closure will operate until 01/02/2024 and an order will be made to cover the further period.

Enquiries should be made to Atea McGregor of Mulberry Homes. Tel: (01604) 263544. Email: atea.mcgregor@mulberryhomes.co.uk

Remembrance Day

Due to Rev Philip Merry's retirement we have been allocated a retired Vicar for Remembrance Day this year, the service in church will take place on Sunday 12 November and commence at 10.20 followed by a walk to the war memorial at

10.50 for the minute's silence and wreath laying. Everyone is warmly invited to come and pay their respects and also join us for a cup of coffee/tea in the Village Hall afterwards.

Pride in Your Place

Mid Suffolk District Council has recently launched a small new grant entitled 'Pride in Your Place' which is to be used for cleaning and tidying up 'our place'. The Parish Council has applied for this grant of £250 and, if granted, we will use this to repaint the telephone box/defibrillator, give the two village noticeboards a fresh coat of varnish; tidy up the flower troughs for the winter; tidy up around the war memorial plus giving the street signs and village signs a jolly good clean. If anyone is interested in lending a hand, please volunteer through the Clerk at badwellashpc@outlook.com. Thank you.

Bus Shelter benches

We have taken delivery of two sturdy recycled plastic benches and hopefully by the time you are reading this edition of the Broadsheet, they will have been installed

for your convenience. A big thank you to Andy Mellen our Leader of the Council at MSDC for his generosity in providing the funds to do so.

20s Plenty

Like many other villages, we have been asked to consider reducing the speed limit within the village to 20mph from the current 30mph. The Parish Council has agreed to explore people's thoughts regarding this possible change – if you feel strongly either way, please contact the Clerk by email in order that we can assess the mood – this applies to both Badwell Ash and Long Thurlow.



Quick Quiz

The following dogs all appear well known films, books or TV shows. Name the show, film or book they appear in.

1. Snowy
2. Santas Little Helper
3. Bullseye
4. Snoopy
5. K9
6. Toto
7. Eddie
8. Spotty Dog
9. Roly/Wellhard/Willy
10. Timmy



Colour me in...



Wildlife corner

Katy Haylock

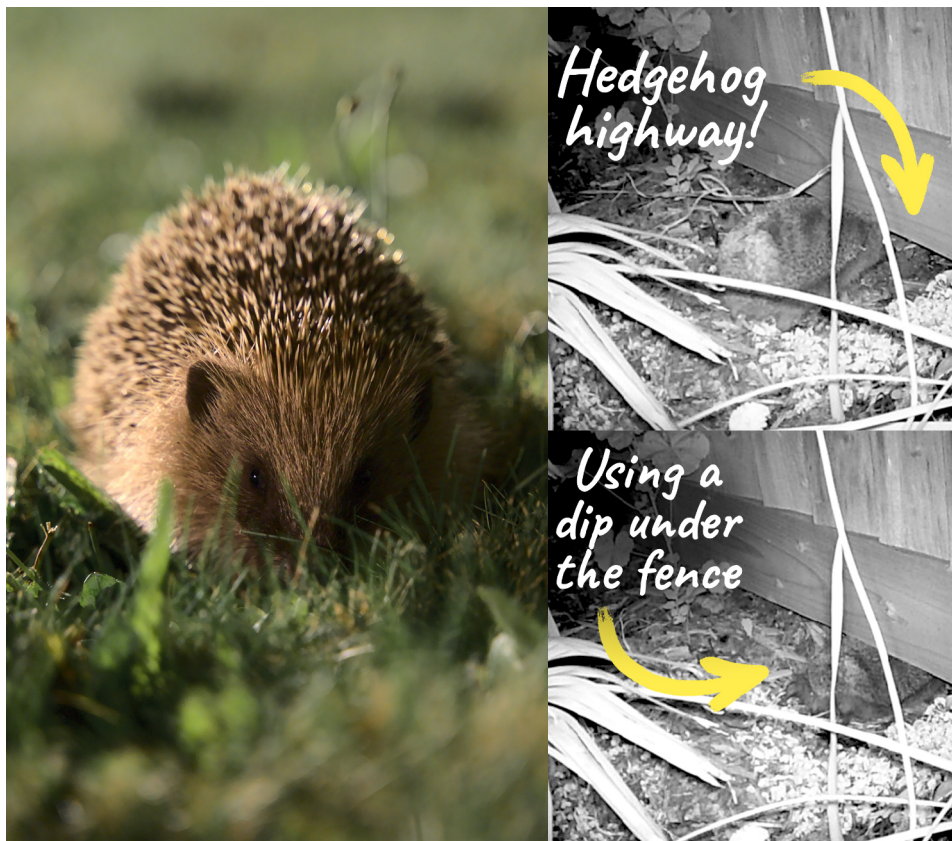
It's that time of year again, when we're nearing the hibernation time for hedgehogs.

They love to nest and hibernate in compost heaps, leaf piles, and purpose-built hedgehog houses of course! They have also been known to go under sheds and tarpaulin.

If you find a female with babies it's best to re-cover them so you don't disturb them. If this isn't possible or the hedgehog is injured, or out in the daytime and looks in poor condition please contact a local hedgehog/wildlife rescue – or a vets.

Take care tidying your garden (especially when using) as there may be a hedgehog snoozing under the grass, leaf pile or compost pile.

You can help hedgehogs and other wildlife by leaving out a shallow dish of water for them. If you want to really help hedgehogs, talk to your neighbour about creating a hedgehog highway between your gardens by cutting a hole or digging a dip for them to go under. Plus leaving a quiet wild corner or leaf pile in your garden may encourage them to pay you a visit!



The Toads Need You!

Are you good at admin?
Have you got time to spare?
Could help the toads?

Toad patrol is looking for someone to help create the rotas and organise the volunteers. The patrols run February to April, and you'll be supported by a fab team of helpers.

For more info, contact Katy on 07806660162.

The 4Cs

Jackie Russell

The 4Cs September

The 4Cs continue to hold their monthly sessions with over 30 people joining us in August.

A MacMillan Coffee morning was held on 15th September.

**MACMILLAN
CANCER SUPPORT**

The group would like to say whether you joined us for the cause, the chatter or the tasty treats or the raffle, your generosity helped raise a fabulous £331-80 to help support people living with cancer.

Thank you to everyone for making our Coffee Morning special.

Great Ashfield & Badwell Ash WI

Midge Hawkins

An Indian summer has arrived for us all to enjoy and autumn colours will be with us before we know it, along with the darker evenings and probably more rain. Let us all enjoy the warmth while it is here.

We held our August garden meeting in Badwell Ash Village Hall. We moved it because the weather had been extremely changeable. It turned out to be a very hot day so being inside was a more favourable option. Although numbers were down due to holidays we all had a very enjoyable afternoon.

For our September meeting we had Robert Halliday talking about Suffolk Calendar Customs. He is a man who is very passionate about his subject and is a mine of information. He spoke about various customs that happen throughout the year in Suffolk from the Black Shuck at Bungay to Jankyn Smyth who was a significant benefactor to the town of Bury St Edmunds and a mass is still held each year in St Mary's Church to mark his death in 1481.

Our next three meeting – all listed below, are to be held in the Lord Thurlow Hall at Great Ashfield at 7.30pm unless otherwise stated. Our meetings are held on the second Thursday of each month. Afternoon meetings – December 2023, January and February 2024 are 2.30 to 4.30pm

12th October at 7.30pm – This is an OPEN MEETING and our speaker Norma Howells will be talking about Medical Detection Dogs. This talk promises to be extremely interesting as this charity is at the forefront of innovative and pioneering research into a dog's ability to detect the smell of human diseases. This meeting is open to all and we ask all visitors to pay £3 which includes tea/coffee, refreshments and a raffle ticket.

9th November at 7.30pm – is Geoffrey Kay who will give a talk on Crystal Palace and the Great Exhibition.

PLEASE NOTE... Change of venue to Badwell Ash Village Hall – small hall

On Saturday 11th NOVEMBER we are holding...



A CHRISTMAS FAYRE
In Badwell Ash Village Hall from 11am to 3pm

PLEASE NOTE THAT THE VENUE HAS BEEN CHANGED TO THAT ADVISED IN THE LAST ISSUE

LOTS OF DIFFERENT CHRISTMAS GIFTS TO PURCHASE – TEA, COFFEE & CAKES & MUCH MORE

If you are interested in booking a table please contact me on the number below to register your interest/book a table. The cost per table is £10.



14th December – Afternoon Meeting at 2.30pm

Our Speaker Mike Wabe is giving a talk about 'Dickens a Christmas Carol'.

We would welcome any new members to join us. We are not a huge group but a very friendly one and we invite you to come and see what we are all about. All new visitors have 1 free meeting and then pay £3 for each of the next 2 meetings before deciding whether or not to join. This includes a raffle ticket and refreshments.

Please feel free to ring me for any further information on 01359 259399.

Citizens Advice



I need a new car for work, but I can't afford to buy one, so I've been looking at second-hand options. I've heard so many horror stories about people buying cars that turn out to be faulty. I'm worried I won't know what to check, especially as I know very little about cars. How can I make sure I don't buy a dud car?

For many people, buying a car is a significant purchase. The process can seem daunting and complicated, whether it's new or second-hand.

First of all, where are you going to buy the car? If you're buying from a trader, choose a trustworthy one with an established name with a good reputation. Ideally, they will be part of a trade association or follow the industry's code of practice.

Buying via an auction is much riskier as you'll have fewer legal protections like the right to returns or refunds, so carefully read

the terms and conditions before you bid.

There are a few extra steps if you buy from a private seller. For instance, try to inspect the car at their home address so that if something goes wrong later, you have a record.

Make sure the car's details are correct by using the DVLA's free online vehicle information checker. You'll need the registration number, MOT test number, mileage, and make/model of the car to do this check. Also, check the car's MOT history for free on gov.uk/get-vehicle-information-from-dvla.

Keep a copy of both these results (take a screenshot or download the information) and the original advert or description of the car. You might also consider getting a private history check to see if the car's been reported stolen, still has money owing on it, or has been in a serious crash. This will cost about £20.

Inspecting the car is crucial before buying. Ideally, do this during the day when it's not raining (scratches are harder to see on a wet car) and take it for a test drive for at least 15 minutes and on different types of

roads, if possible. Check you have the appropriate insurance for a test drive (either your own or the seller's policy might cover you).

Don't be afraid to haggle on the price; only pay what you can afford. Ensure you get the original (not a photocopy) of the log book and valid MOT test certificate. Never buy a car without the logbook.

Often, despite doing all these checks, you might find something wrong with the car after you've bought it. You may have a legal right to a repair, the cost of a repair or some money back, but it's on a case-by-case basis. If something has gone wrong with your car and you need help, you can call the Citizens Advice consumer helpline on 0808 2231133.

Citizens Advice Mid Suffolk can advise on this issue and much more, including debt, finances, employment, benefits and family/relationships. You can contact them by phone at 01449 676060, visit in person at Milton House, 5 Milton Road South, Stowmarket IP14 1EZ or use the contact form at midsuffolkcab.org.uk/contact-us. Our opening hours are Monday-Thursday 9.30am – 3.30pm and Friday 9.30am – 12.30pm.

In the Garden

Janet De Vries

Jobs in the garden for October and November.

As we slide into autumn, it doesn't seem possible that the summer has been and gone. Whereas last year, because of the intense heat, everything was brown, and the leaves were crisp. With all the rain this year, lawns and plants are still lovely and green. However, it's time to start tidying up and digging over your beds, enriching the soil with homemade compost, emptying spent summer pots and hanging baskets, and adding the contents to the compost heap.

Now is the time to reduce the height of your shrub roses to avoid windrock damage over winter. Although I don't prune my bush roses until March, I give them a haircut to tidy them up before the winter.

To prevent waterlogging in winter, you should ensure that your pots are up on 'feet' if you intend to keep the plants in their pots.

If you didn't plant your spring bulbs during September, now is the time to put in daffodils, crocuses and snake's-head fritillaries. Thinking about how you want them displayed - in the border or pots,

maybe in a section of lawn, just throwing the bulbs on the ground and planting them where they land to give a more natural look.

Bedding plants such as wallflowers and forget-me-nots can be planted now, ready for spring displays, along with perennials that need a cold spell to aid germination, such as primulas.

A job most of us don't enjoy is cleaning out the greenhouse to get rid of debris that can harbour overwintering pests and diseases. You should wash the glazing to let in as much autumn daylight as possible, and when finished, you can stand back and realise it was a job well done.

Lift dahlia tubers in November. After the first frost, clean off any soil and store in dry compost in a cool, frostproof place. Now is a good time to plant bare-root hedging, roses, trees and shrubs before the weather turns cold. Plants like agapanthus should be mulched with a thick straw or garden compost layer. However, if the temperatures drop to the extreme levels we had last winter, I suggest lifting any pots indoors and covering outside plants with fleece. I lost all mine.

If planting young trees and shrubs, make sure you put stem protection guards around them if rabbits are a problem; otherwise, they'll have a feast.

It's time to think of the wildlife, so leave the seed heads on plants such as fennel, teasel and echinacea. Where possible, don't cut mature ivy back, as the flowers provide a rich source of pollen and nectar for late-flying insects, and berries provide food for birds.

Plant a pot of nectar-rich crocuses to feed hungry queen bumblebees in spring, place the pot in a sunny spot, and keep it watered. Wash out all your bird feeders, fill them with seeds and suet products and ensure they have a plentiful water supply.

We all say that now summer is over, maybe there's more time for relaxing, but I always find there are still lots of jobs to do, tidying the borders and thinking about moving some plants and shrubs that may perform better elsewhere. Take time to wander around the garden, noting what can be improved so you can start planning for the spring and make the garden a riot of colour.

Until then, Happy Gardening.

This issue is sponsored by...

CLARKES

OF WALSHAM LIMITED



TIMBER & BUILDING SUPPLIES



GARDEN & FENCING



COUNTRY STORES



**FREE
DELIVERY
FOR ORDERS OVER
£100**

SERVING TRADE AND PUBLIC SINCE 1908



www.clarkesofwalsham.co.uk | 01359 259 259

The Street, Walsham-le-Willows, Bury St Edmunds, Suffolk, IP31 3BA